



DMD10W

10.1" Ultra Thin Display

OWNER'S MANUAL





Contents

| | |
|----------------------------------------------------|-----------|
| Important Notes..... | 3 |
| Copyright Notes | 3 |
| FCC Compliance | 4 |
| Precautions..... | 5 |
| Installation Guide..... | 5 |
| Product Highlights and Hardware Configuration | 6 |
| Product Specifications | 7 |
| Product Overview | 8 |
| Power | 9 |
| GUI Introduction..... | 10 |
| Split Screen..... | 12 |
| Quick Control Features | 13 |
| Status Bar Controls | 14 |
| Connecting to Apple CarPlay..... | 15 |
| Connecting to Android Auto..... | 18 |
| 2-Way Phone Mirroring | 21 |
| iPhone | 21 |
| Android..... | 26 |
| Zooming in and out in 2-Way Mirroring | 29 |
| How to stop mirroring | 31 |
| Theme and Wallpapers..... | 32 |
| Audio Output Options | 33 |
| FM Transmission | 34 |
| Bluetooth Audio Output | 35 |
| Performing a Software Update | 36 |
| System Settings Menu | 37 |
| Warranty | 40 |



Important Notes

Please read the instructions carefully before attempting to operate.

- Ensure that the DMD10W is mounted in a place that will not block your view of the road.
- The DMD10W has a built-in speaker. However, to play music over your car radio please ensure that the FM Transmitter function has been set up and is connected properly with your car radio. (See Page 34)
- Some Android operating versions may not be compatible with the Android app. As such, we strongly recommend updating your phone's operating system to the latest version.
- Ensure that you are using the power cable provided with the purchase of your phone (or compatible cable) to connect the DMD10W and your phone.
- Apps displayed on the DMD10W (when pairing with either CarPlay® or Android Auto) will vary depending on the apps available on the connected phone.
- If you receive an error message while using the memory card, please power the device off and turn it back on. If an error occurs while using the memory card, it is recommended that you try using the memory card after formatting it or use a new memory card.

Copyright Notes

Apple and Apple CarPlay are trademarks of Apple Inc., registered in the U.S. and other countries and regions.

Android and Android Auto are trademarks of Google LLC.

The Bluetooth® word mark and logos are registered trademarks owned by Bluetooth SIG, Inc. and any use of such marks by Dual Electronics is under license.

Other trademarks and trade names are those of their respective owners.



DMD10W

FCC Compliance

This device complies with Part 15 of the FCC Rules. Operation is subject to the following two conditions:

1. this device may not cause harmful interference, and
2. this device must accept any interference received, including interference that may cause undesired operation.

Warning: Changes or modifications to this unit not expressly approved by the party responsible for compliance could void the user's authority to operate the equipment.

This equipment complies with FCC radiation exposure limits set forth for an uncontrolled environment.

This equipment should be installed and operated with a minimum distance of 20cm between the radiator & your body.

This transmitter must not be co-located or operating in conjunction with any other antenna or transmitter.

Note: This equipment has been tested and found to comply with the limits for a Class B digital device, pursuant to Part 15 of the FCC Rules. These limits are designed to provide reasonable protection against harmful interference in a residential installation. This equipment generates, uses and can radiate radio frequency energy and, if not installed and used in accordance with the instructions, may cause harmful interference to radio communications.

However, there is no guarantee that interference will not occur in a particular installation. If this equipment does cause harmful interference to radio or television reception, which can be determined by turning the equipment off and on, the user is encouraged to try to correct the interference by one or more of the following measures:

- Reorient or relocate the receiving antenna.
- Increase the separation between the equipment and receiver.
- Connect the equipment into an outlet on a circuit different from that to which the receiver is connected.



- Consult the dealer, an experienced radio/TV technician, or Dual customer service for help.

Dual Electronics Corp. - Customer Service
Toll Free: 1-866-382-5476
Monday-Friday, 9AM-5PM EST

Installation Guide

1. Turn off the car engine
2. Secure the DMD10W to the dash using the dash mount
3. Plug in the 12V adapter
4. Use the included USB-C power cable to plug the DMD10W into the car accessory outlet

Precautions

- Note: During wiring, the cable can be laid along the edge of the car windshield for a clean look.
- Avoid physical pressure: Do not squeeze or apply force
- Maintenance: If you discover a problem, do not continue to operate the DMD10W while it is malfunctioning.
- Emergency Restart: If the DMD10W behaves abnormally or freezes, press and hold the Power Button for 9 seconds to perform a forced power-off and restart.



DMD10W

Product Highlights and Hardware Configuration

| Feature | Description |
|--------------------------------------|-----------------------------------------------------------------------------------------------------------------------------------------------------------------------------------------------------------------------------------------------------------------------------------------------------------------------------------------------------------------------------------------------------------------------------------------------------------------------------|
| Product Highlights | <ul style="list-style-type: none">• 10.1"High resolution touchscreen• Wireless Apple CarPlay and Android Auto• Output to vehicle sound system via Bluetooth Transmisson, 3.5mm aux, or FM transmission• 2-Way Phone mirroring for Apple and Android phones (requires iPhone 12 or up and Android OS 13 or higher)• Multiple mounting options: Magnetic dash mount arm or rear seat headrest• OTA upgrades |
| System Hardware Configuration | |
| Feature | Description |
| Display | Size: 10.1 inch Resolution: 1280x800 |
| Touchscreen | Capacitive Touch |
| Mic | Built-in Single Mic, -40db ± 2db |



Product Specifications

| Type | Description |
|--------------|----------------------------------------------------------------------------------------------------------------|
| Working Temp | -20°C ~ +70°C |
| Wi-Fi | Dual-band 2.4/5GHz 802.11a/b/g/n/ac, Wi-Fi/AP Hotspot, supports screen casting and mobile data simultaneously. |
| Bluetooth | Bluetooth 5.0, supports BT calls and music (A2DP). |
| FM Output | 87.5 - 107.9 MHz |
| Power Port | USB-C 5.0V 3A |
| Speaker | 2W Output |
| microSD Card | Supports SD card playback. |
| AUX Port | 3.5mm jack supports stereo output |

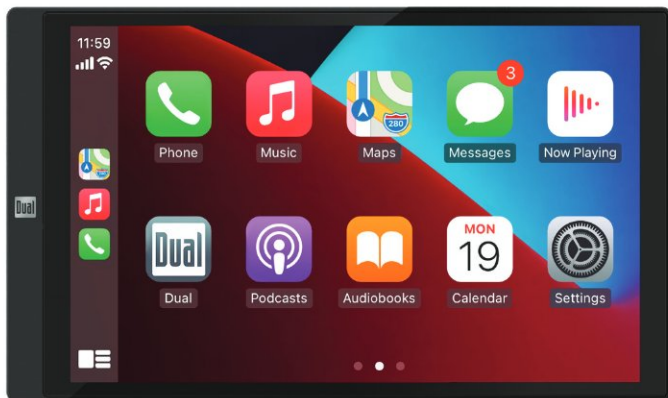


DMD10W

Product Overview



Aux Output
microSD
Card Input
USB-C
Power



Magnetic
Dash Mount



Headrest
mount



Power

Power Button

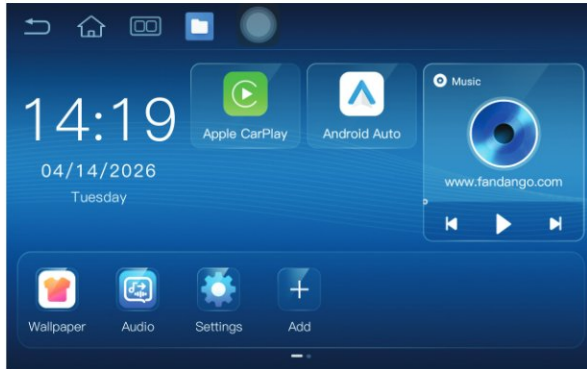
- On/Off: Press Power Button and hold for 3 seconds to turn on/off
- Reset: Located on the back. Use a pin to press and reset the device.






DMD10W

GUI Introduction

Main GUI

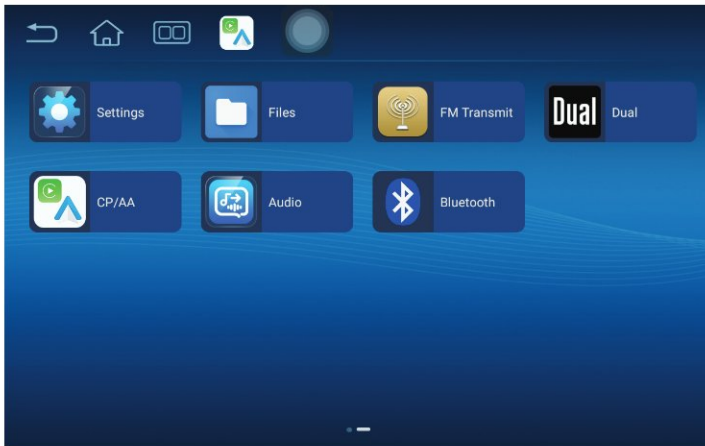


Navigation Bar Icons:

-  1. Back: Return to the previous layer
-  2. Home: Return to the main interface quickly.
-  3. Split Screen: Divide the screen into two independent areas (e.g., Music on one side, CarPlay on the other).

This feature allows users to divide the central display into two independent areas, enabling the simultaneous use of two applications. For example, users can play music while using CarPlay navigation at the same time.

Displays the currently open applications; click to instantly open the corresponding app.



Swipe left on the main interface to enter the second page.

1. Settings: System settings-related features
2. Files: Open the File Manager, press and hold the desired file, and click on the trash can icon in the top-right corner for deletion. Copying, pasting, and other operations are available through the three dot menu in the top-right.
3. FM: FM Audio Output
4. CP / AA: Apple CarPlay or Android Auto connection interface
5. Audio: Enable SPK, AUX, FM, and Bluetooth audio options
6. Bluetooth: Turn on Bluetooth, click on the pairing option with the new device, and the system will automatically scan nearby Bluetooth signals, list the searched Bluetooth names, and click on "Search for Bluetooth Name" to connect.

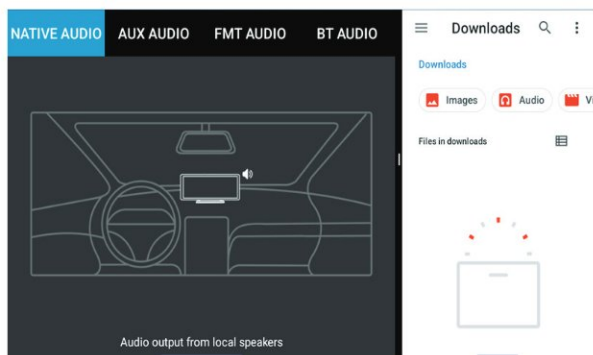




DMD10W

Split Screen

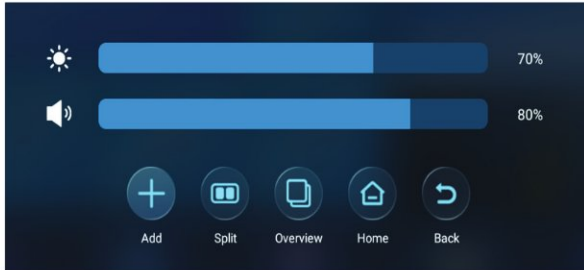
Multi-tasking Split Screen:

While in the split-screen interface, swipe up from the bottom of either section to display a list of multiple available applications. For example, by swiping up from the bottom-left to reveal the app list and then selecting "Audio," the Audio application will open in that specific section of the screen.



-  1. Exit Split Screen: Clicking the split-screen button again will disable the split-screen function and return the display to full-screen mode.
-  2. Floating Button: Provides quick access to functions for adjusting brightness and music playback progress.

Quick Control Features



Floating Menu Actions



1. Add Shortcuts: Click to add shortcut applications. You can add your favorite or frequently used apps for quick access, with a maximum limit of three.



2. Quick Split-Screen: Click to activate the quick split-screen function.



3. Clear Background: Click to clear applications running in the background.



4. Home: Click the Home button to return to the main interface instantly.



5. Back: Click to return to the previous screen or menu level.



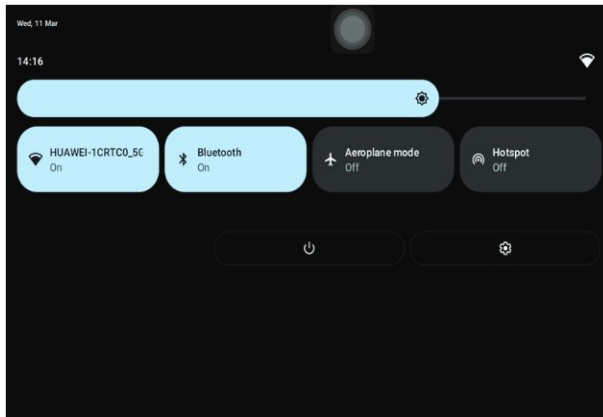
DMD10W

Status Bar Controls

Status Bar Controls

Swipe down from the top of the main screen to access the status bar.

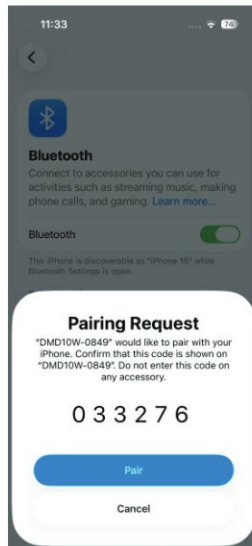
- Quick Toggles: Adjust the brightness level and toggle Wi-Fi, Bluetooth, and Hotspot on or off.
- Power Menu: Access buttons for Shutdown, Restart, and Screenshot functions.
- Settings Access: Tap the Settings icon to enter the system configuration menus.



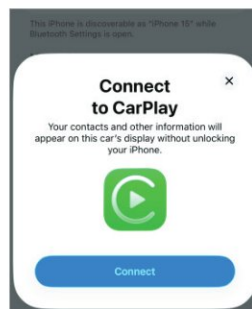
Connecting to Apple CarPlay

On the Phone

1. Find the DMD10W device name in the Bluetooth settings and proceed with pairing



2. Select "Connect" and proceed, it will connect to the DMD10W, allowing you to use CarPlay.

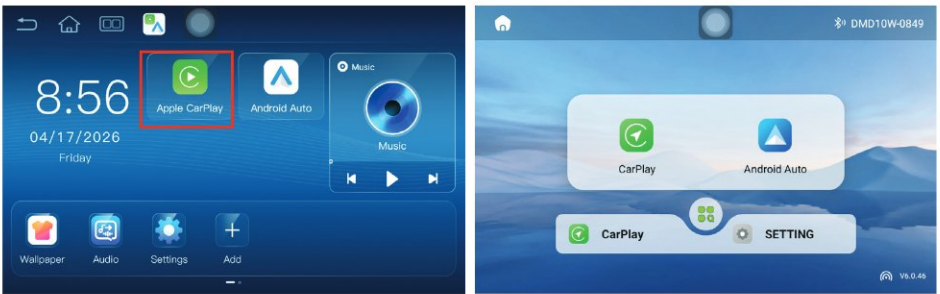




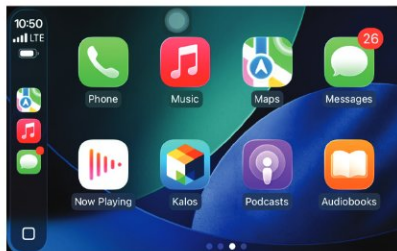
DMD10W

On the DMD10W

When you turn on the DMD10W, the main screen shown in the image will appear. Please select CarPlay from the screen to proceed with the connection.



Allow pairing with your mobile phone in order to use CarPlay. When CarPlay starts, it appears as shown in the screen below.





After a successful Apple CarPlay connection, phone features such as Maps, Music, Phone, and Messages will sync to the DMD10W.



- **Returning to Main UI:** To return to the car's original interface, click the Exit icon or use the floating button.
- **Disconnecting:** In the Bluetooth interface, click the blue "Carplay Connected" text to trigger a disconnection prompt, then click OK.

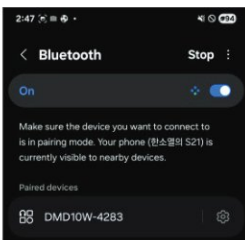
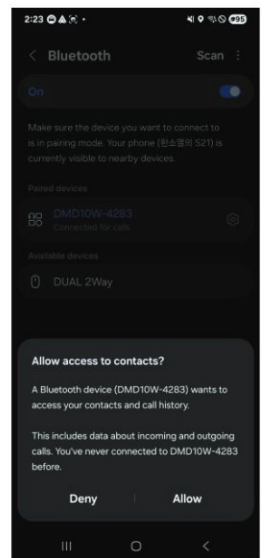
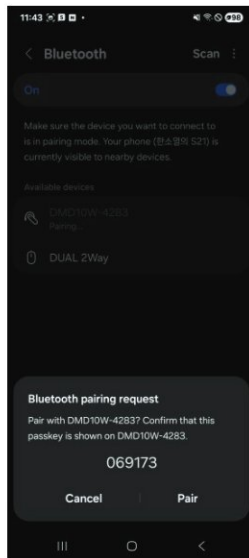
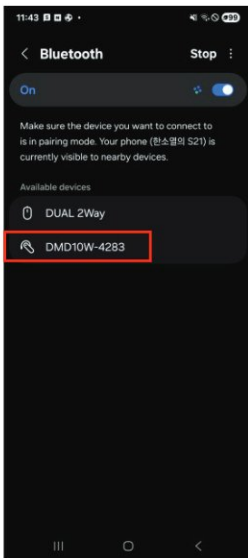


DMD10W

Connecting to Android Auto

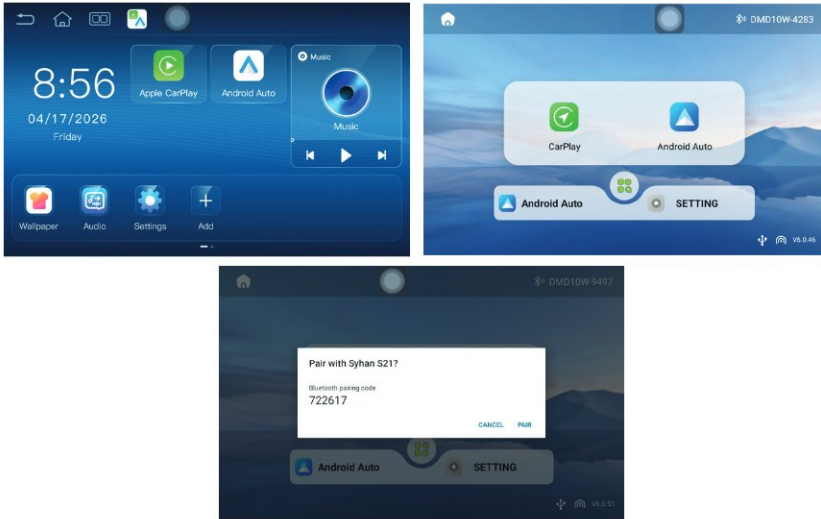
On the Phone

1. Find the DMD10W device name in the Bluetooth settings and proceed with pairing.
2. Select "Connect" and proceed, it will connect to the DMD10W, allowing you to use Android Auto.

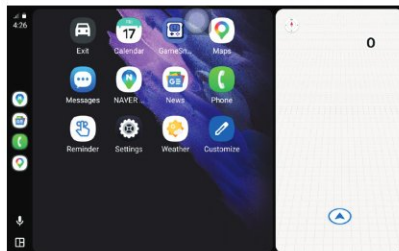


On the DMD10W

When you turn on the DMD10W, the main screen shown in the image will appear. Please select Android Auto from the screen to proceed with the connection.



Allow pairing with your mobile phone in order to use Android Auto. When Android Auto starts, it appears as shown in the screen below.





DMD10W

Feature Sync:

After a successful Android Auto connection, phone features such as Maps, Music, Phone, and Messages will sync to the DMD10W.



- Returning to Main UI: To return to the car's original interface, click the Exit icon or use the floating button.
- Disconnecting: In the Bluetooth interface, click the blue "Android Auto" text to trigger a disconnection prompt, then click OK.

Note: Please keep the latest Android Auto installed on your mobile phone and update it periodically.

2-Way Phone Mirroring

iPhone

Note: This feature is supported only on iPhone version 12 or higher.

1. Please install the “**Dual Screen Sync**” app on your phone. You can search for it in the App Store.
 2. Please ensure that CarPlay is running before starting Dual mirroring.
- ** You must launch CarPlay first to use the dual mirroring feature. ****
3. Select and launch the Dual app installed on your DMD10W.
 4. Then, select and launch Dual Screen Sync installed on your phone as well.



1. Swipe down from the top of the screen to display the split screen menu



2. Press Split Screen to start CarPlay on the left and the Dual app on the right automatically



While the connection is in progress, phone model will be displayed on the tablet screen

If this is your first time connecting mirroring continue to **One Time Set Up** on page 22, if not, skip to page 25.



DMD10W

iPhone - One Time Set Up

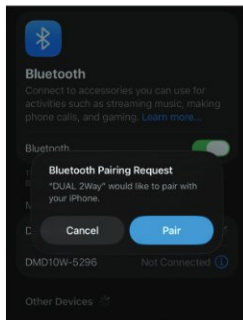
To use the 2-Way mirroring function with an iPhone, additional settings 1 and 2 are required, but only need to be set up only once.

Settings 1

1. After connecting CarPlay, turn Bluetooth off and then re-enable it in the Bluetooth settings; "DUAL 2Way" will appear in the list of installed apps, and enable it.



2. Select DUAL 2Way to Pair. Once you have finished the settings you can exit the settings menu.



Settings 2

Configure Touch and Touch Sensitivity settings. There are two options.

Option 1

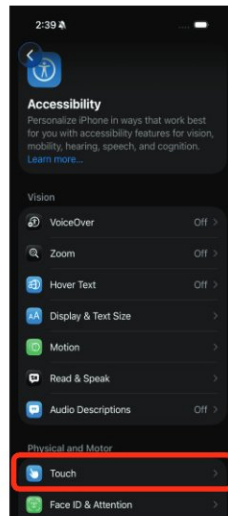
Settings



Accessibility



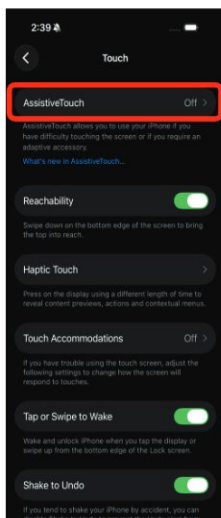
Touch



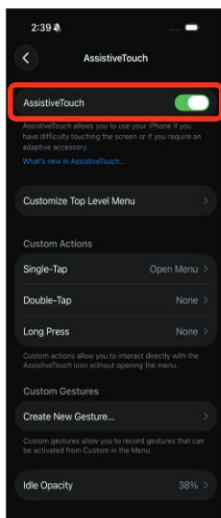


DMD10W

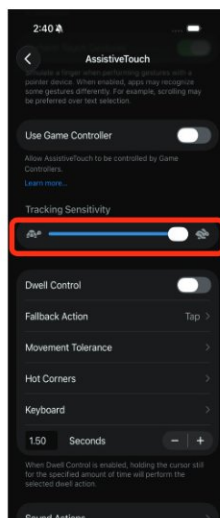
AssistiveTouch Off



AssistiveTouch On

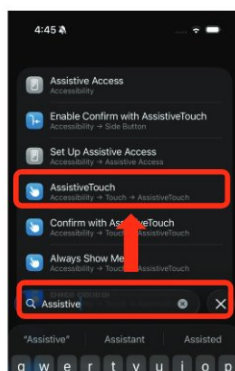


Tracking Sensitivity Max



Option 2

Search for '**AssistiveTouch**' directly in Settings. Once it appears, select '**AssistiveTouch**'.



2-Way Phone Mirroring - iPhone Continued

3. Please find and select the Dual app installed on your iPhone

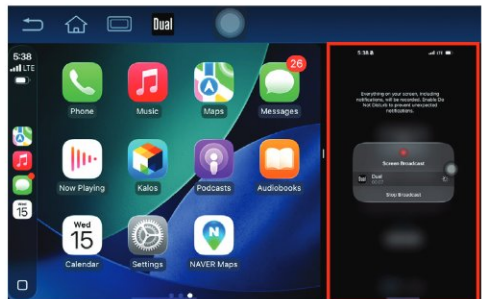
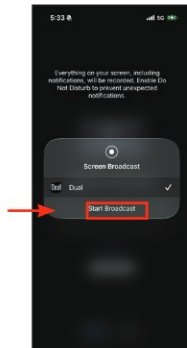


4. To prepare for screen mirroring, touch Auto Connect or Broadcast.

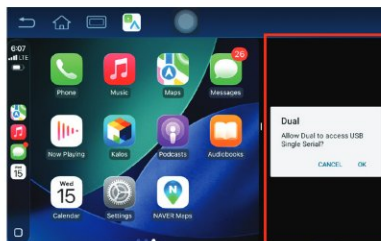
This part is omitted when turning off the power or restarting.



5. When you touch 'Start Broadcast', the mobile phone screen will be mirrored to the DMD10W screen after a short while.



6. Please allow Dual devices access mirroring (a single USB serial port)



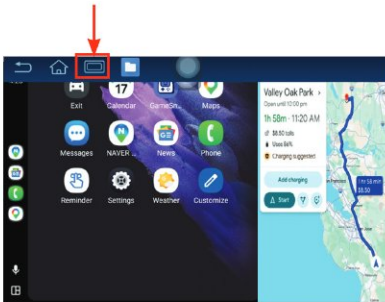


DMD10W

2- Way Phone Mirroring Android

Note: This feature is supported only on Android version 13 or higher.

1. Please install the “Dual Phone Sync” app on your phone. You can search for it in the Play Store.
2. Please ensure that Android Auto is running before starting dual mirroring.
**** You must launch Android Auto first to use the Dual mirroring feature. ****
3. Select and launch the Dual app installed on the DMD10W.
4. Then, select and launch the Dual Phone app installed on your phone as well.



1. Swipe down from the top of the screen to display the split screen menu.



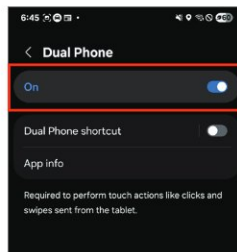
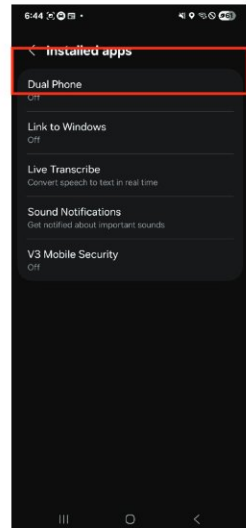
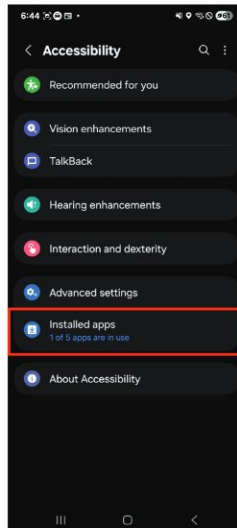
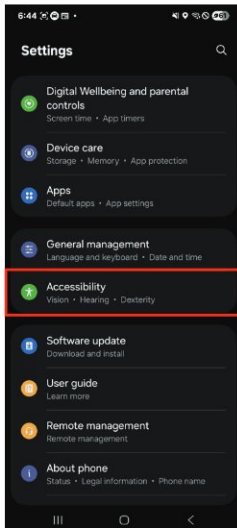
2. If you select Split Screen, the Dual app automatically opens on the right screen.

If this is your first time connecting mirroring continue to **One Time Set Up** on page 27, if not, skip to page 28.

Android - One Time Set Up

To use the **2-Way mirroring feature** on an Android phone the below additional setup is required once, and no further setup is necessary thereafter.

- Simply select Accessibility in your phone settings, find the Dual Phone app in the list of installed apps, and enable it.
- Once you have finished all the settings, you can exit the settings.





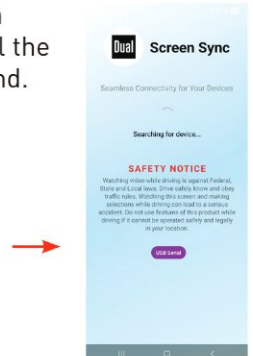
DMD10W

2-Way Phone Mirroring - Android Continued

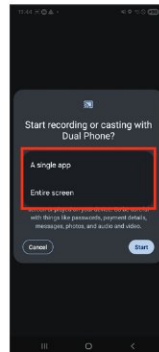
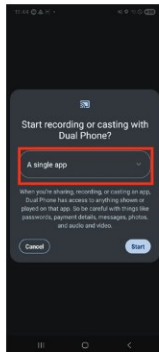
3. Please find and select the Dual app installed on your phone.



4. Please wait a moment until the device is found.

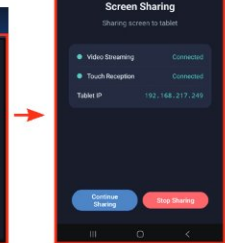


5. Select your desired screen mirroring option from specific screen or full screen, then press **Start** to begin screen mirroring.



6. Press **'Continue Sharing'**.

As shown in the picture, the mobile phone screen will mirror on the DMD10W exactly as is.

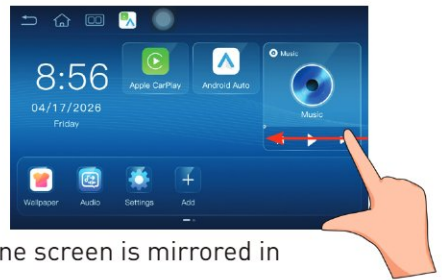


If 2-way mirroring is disconnected from the DMD10W, please press the 'Stop Sharing' and follow the above steps to re-connect.

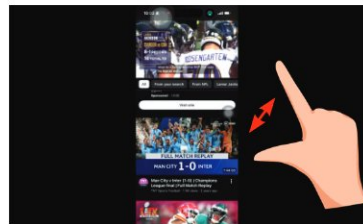
Zooming in and out in 2-Way Mirroring

Note: 2-Way Touch control of the mirrored screen is not available during or after zooming in and out on the screen.

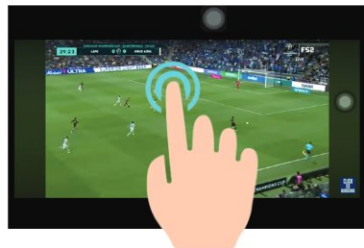
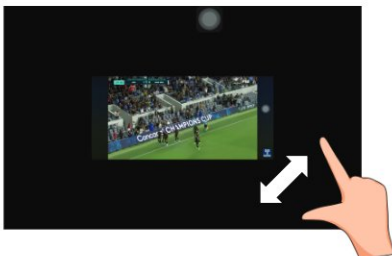
1. Touch the screen with your finger and pinch to zoom in or out. To view on a larger screen, go to the main screen and swipe left to find the Dual App icon.



2. When you tap the Dual app, the smartphone screen is mirrored in full screen mode instead of split screen



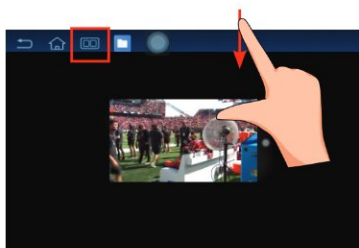
3. If you want to view the mirror screen in landscape mode, switch to full screen on the phone, then pinch the screen with your fingers to zoom in or out.





DMD10W

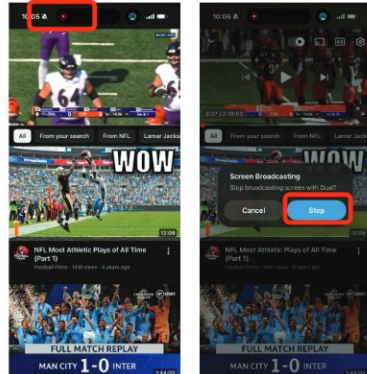
- 4 **Double-tap** on the large screen to return to the original screen. To return to split screen mode, swipe the top of the screen until the menu bar appears, then press the split screen button.



How to stop mirroring

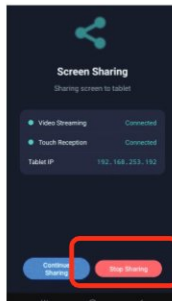
On the iPhone

1. To stop mirroring, press the red circle at the top of the screen. Press the stop selection button that appears on the screen to stop the mirroring function.



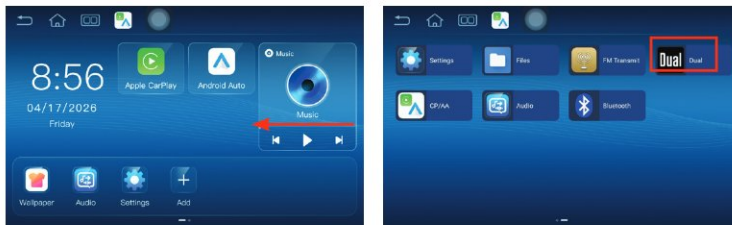
On the Android phone

1. To stop mirroring press the Dual app on your phone and press the Stop Sharing button to disconnect.

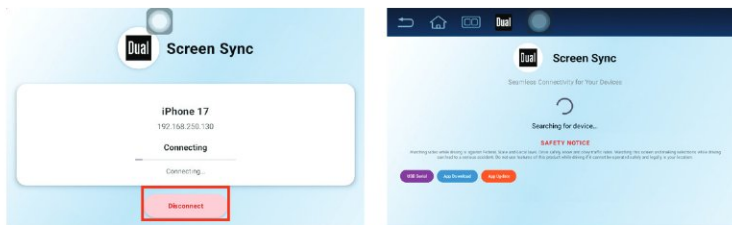


On the DMD10W

2. Go to the main screen and swipe left to find the Dual App icon.



3. Press Disconnect at the bottom of the Dual Mirroring start screen, the Dual 2-way and Dual App update bars will appear.



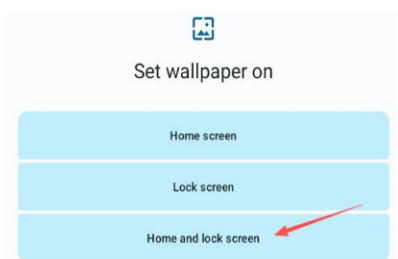
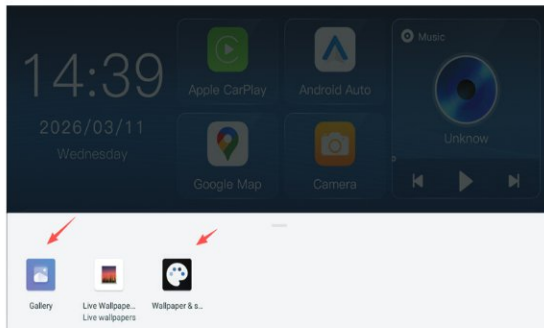


DMD10W

Theme and Wallpapers

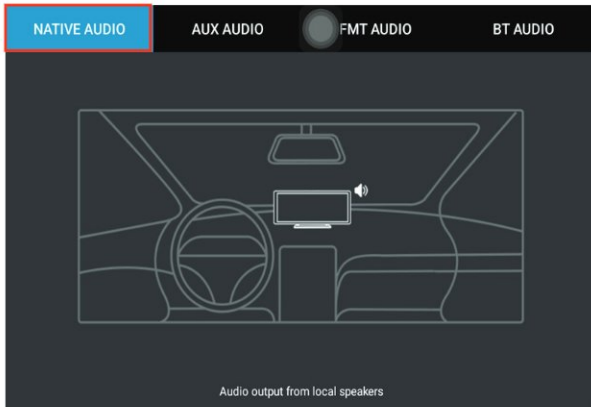
Open the wallpaper, styles, or gallery, and switch between your preferred wallpapers.

Select 'Change Wallpaper' and choose where to have the new wallpaper display
Audio out: Click to control the SPK, AUX, FM, and BT control interfaces.

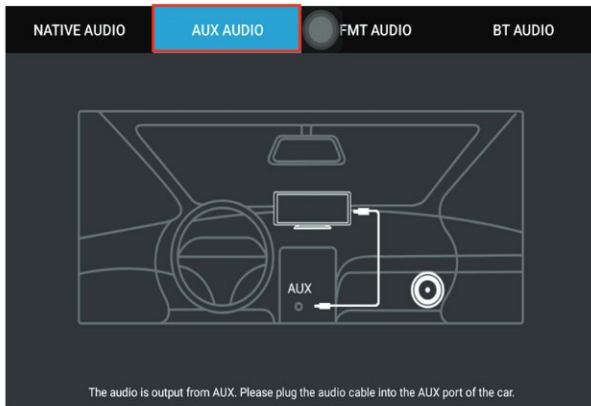


Audio Output Options

Click to control the SPK, AUX, FM, and BT control interfaces.



Native Audio: Audio is played through the device's built-in speakers.

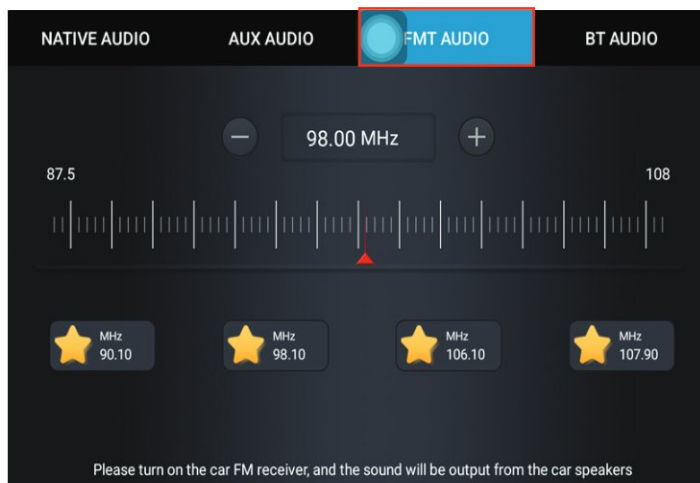


AUX Audio: Audio is output via the AUX port; please insert an audio cable into the car's AUX jack.



DMD10W

FM Transmission



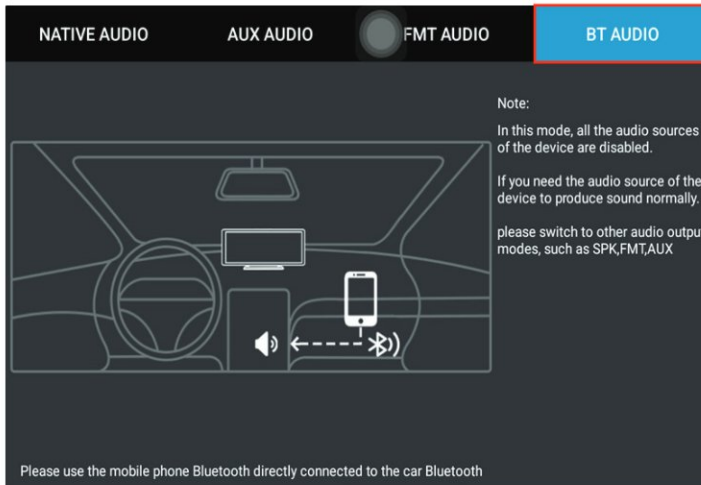
FM Audio:

Turn on the car's FM receiver, and the sound will be output from the in-car speaker.

1. After entering FM, you can manually adjust the frequency.
Tip: Turn on the radio first and adjust it to an unused FM frequency
2. Turn on the radio and adjust it to the appropriate frequency. The FM function will be used normally.

Bluetooth Audio Output

BT Audio: In this mode, after the Bluetooth connection, all audio sources on this device are produced normal sound using the in-car audio system.





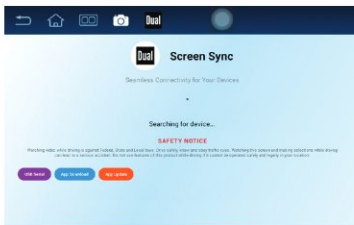
DMD10W

Performing a Software Update

The app update must be performed with the DMD10W's WiFi turned on and connected to mobile data.

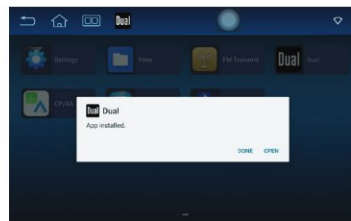
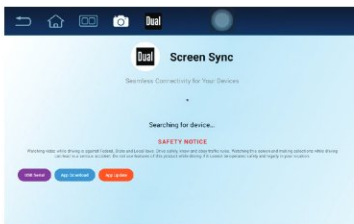
How to update the 2-Way Mirroring (ESP32 Firmware Flash)

1. Press “connect” to check the Dual 2 way connection status.
2. Press “select.bin”, locate and select the update file, and click it to proceed with the update automatically



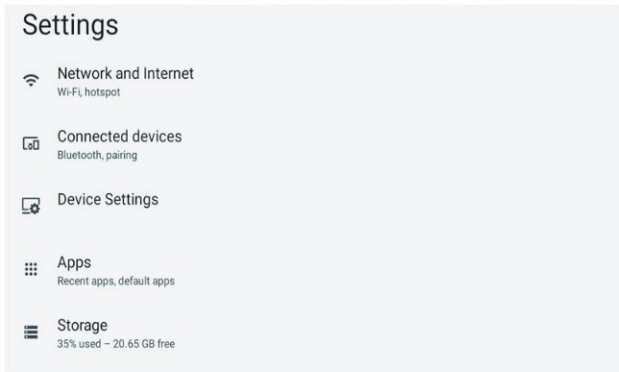
How to update the Dual Mirroring App itself in the tablet

1. If an update file is available on the server, download the update app. Currently, the update file has not been uploaded
2. Once the app is downloaded, please press the update button to proceed with the update.



System Settings Menu

Select 'Settings' to enter the system settings interface and perform system-related operations.



Connected Devices

Turn on Bluetooth, click on the pairing option with a new device, and the system will automatically scan nearby Bluetooth signals, list the searched Bluetooth names, and click on "Search for Bluetooth Name" to connect.

Device Settings

The navigation bar position can be selected by clicking on either the left or right side.

Press the volume switch; when turned on, there is sound when clicked; when turned off, there is no sound when clicked.



Storage

Click on the "Storage" item in the settings interface to display the total application storage space or data storage capacity, available space, and used space. If an TF card is inserted, it will show the total EXTSD (external SD) capacity, available space, and used space.

Language and Input Methods

Click on the "Language and Input Method" item in the settings interface, and check the spelling check tool to select Smart Spelling Correction.

Default: The corresponding input method can be set.

Date and Time

In the "Date and Time" option of the settings interface, enter the date and time settings interface.

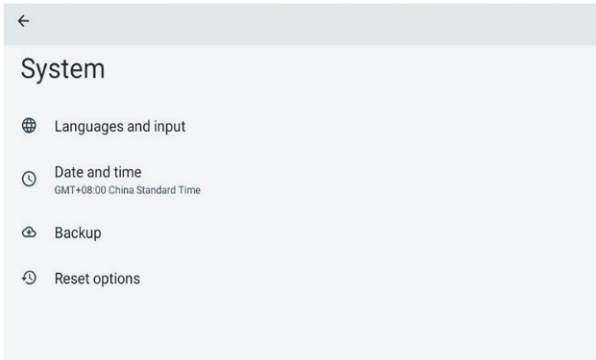
You can choose to automatically determine dates and times, select time zones, use a 24-hour format, and choose date formats, among other information.

For example, if you do not want to use the values provided by the network, click "Automatic" to uncheck the box, then select "Set Date" and "Set Time" manually.

Reset Options

Reset WLAN, mobile data network, and Bluetooth settings, reset app preferences, clear all data (factory reset)

System Settings Menu



- Status Information: System upgrade, device name, IP address, WLAN MAC address,
- Model: Display Product Model
- Android version: Display Android version
- Firmware version number: Displays the current firmware version number
- Kernel version: Display kernel version information
- Processor Type: Display Processor Type

Swipe left on the main interface to enter the second page.

1. Settings: System settings-related features



DMD10W

Warranty

Limited One Year* Warranty

This warranty gives you specific legal rights. You may also have other rights which vary from state to state.

Dual Electronics Corp. Inc warrants this product to the original purchaser to be free from defects in material and workmanship for a period of one year from the date of the original purchase.

Dual Electronics Corp. Inc agrees, at our option, during the warranty period, to repair any defect in material or workmanship or to furnish an equal new, renewed, or comparable product (whichever is deemed necessary) in exchange without charges, subject to verification of the defect or malfunction and proof of the date of purchase. Subsequent replacement products are warranted for the balance of the original warranty period.

What is covered? This warranty covers all defects in the material and workmanship in this product. The following are not covered: software, installation/removal costs, damage resulting from accident, misuse, abuse, neglect, product modification, improper installation, incorrect line voltage, unauthorized repair, or failure to follow instructions supplied with the product, or damage occurring during return shipment of the product. Specific license conditions and copyright notices for the software can be found via www.dualav.com.

Warranty Coverage

- * Limited 1-year warranty. (Proof of purchase required)
- Extended Coverage: Extend your warranty from 1 year to 2 years when you register online at www.dualav.com. Registration must be completed within 60 days of the original purchase date to qualify for this extension.



What to do?

1. Before you call for service, check the troubleshooting guide in your owner's manual. A slight adjustment of any custom controls may save you a service call.
2. If you require service during the warranty period, you must carefully pack the product (preferably in the original package) and ship it by prepaid transportation with a copy of the original receipt from the retailer to an authorized service center.
3. Please describe your problem in writing and include your name, a return UPS shipping address (P.O. Box not acceptable), and a daytime phone number with your shipment.
4. For more information and for the location of the nearest authorized service center please contact us by one of the following methods:
 - Call us toll-free at (866) 382-5476
 - (Monday-Friday, 9:00 am, to 5:00 pm, EST)
 - E-mail us at cs@dualav.com

Exclusion of Certain Damages:

This warranty is exclusive and in lieu of any and all other warranties, expressed or implied, including without limitation the implied warranties of merchantability and fitness for a particular purpose and any obligation, liability, right, claim or remedy in contract or tort, whether or not arising from the company's negligence, actual or imputed. No person or representative is authorized to assume for the company any other liability in connection with the sale of this product. In no event shall the company be liable for indirect, incidental, or consequential damages.



Dual Electronics Corp.
Toll Free: 1-866-382-5476
Monday-Friday, 9AM-5PM EST

www.dualav.com
©2026 Dual Electronics Corp. All rights reserved.
NSA0426-V01
Printed in China